

# SWINDON TOWN

FOOTBALL CLUB

official programme



1/-

---

First-hand

Lively

Reports

Complete

Comprehensive

Coverage

Close-up Action

Shots

Every Game

At home or away

**The Evening Advertiser**

has it covered

---

---

**M<sup>c</sup>ILROYS**

the Department Store  
with that something extra *Service!*

*Free*

DELIVERIES  
ESTIMATES ON CARPETS & CURTAINS  
CARPET FITTING

WILLIAM McILROY (Swindon) LTD.

Tel. 5294

---



# SWINDON TOWN FOOTBALL COMPANY LIMITED

Registered Office: COUNTY GROUND, SWINDON

**President:** Mr. W. J. CASTLE

**Vice-President:** Mr. J. DAVIES

**Directors:**

**Chairman:** Mr. H. E. LANE

**Vice-Chairman:** Mr. R. FRICKER

Messrs. F. L. COLLINGS, A. W. DONE, M. EARLE, C. J. GREEN, F. PLYER, H. WILLIAMS, K. H. WILMER and Dr. J. NICHOLAS

**General Manager:** Mr. R. A. MORSE

**Team Manager:** Mr. F. FORD

**FRIDAY, 26th DECEMBER, 1969**

**Division II**

## SWINDON TOWN v ASTON VILLA

**Kick-off 3 p.m.**

SWINDON TOWN	ASTON VILLA	OFFICIALS
1 Downsborough	1 Phillips	<b>REFEREE:</b> Mr. L. Callaghan (Merthyr Tydfil)
2 Thomas	2 Wright	
3 Trollope	3 Aitken	
4 Butler	4 Godfrey	
5 Burrows	5 Curtis	
6 Harland	6 Tyler	
7 Heath	7 Rudge	
8 Smart	8 Hamilton	
9 Horsfield	9 Martin	
10 Noble	10 Rioch	<b>LINESMEN:</b>
11 Rogers	11 Anderson	<b>Red Flag:</b> Mr. D. G. Ball (Winchester)
12 Smith	12	<b>Yellow Flag:</b> Mr. A. R. Glasson (Salisbury)
Colours: Red and White		

## *G. A. Streetly*

Tobacconist and Confectioner

10 BOURNE ROAD  
MOREDON SWINDON  
Telephone 4956

## **C. Goodenough and Sons**

Removal and Storage Contractors  
any distance

25 Cricklade Street Swindon  
Telephone 4555 and 3855

## *CECIL GREEN*

Artistic Decorations in all its branches

12 Armstrong Street  
Swindon Wilts  
Telephone 4593

## **W. J. SELWOOD**

Telephone Swindon 5884

### **Saddlery**

General Leather Goods Manufactured and  
Repaired to Your Individual Requirements

103 BROAD STREET  
SWINDON WILTSHIRE

## *Notton's Cafe*

COUNTY ROAD

200 yards from Ground

Perfect meals at all times

For High Class  
Central Heating, Plumbing  
Painting and Decorating  
Electrical Installations  
and Repairs

## **NORTH WILTS Sanitary and Heating Co. Ltd.**

NEWPORT STREET SWINDON  
Telephone 5373/4



THE ALCOMOL FUEL

### **COATE GARAGE**

REPAIRS - OVERHAULS - WELDING  
SERVICING - REBORING - TYRES

Props. E. V. & W. H. Mattick  
Marlborough Road Swindon

## **Leese, Ing & Co. Ltd.**

Mineral Water and  
Squash Manufacturers

LANSDOWN ROAD SWINDON

Telephone 22744

## *Maylott Studios*

For Group and Sports Photographs

Official Photographer to  
Swindon Town Football Club

31 Faringdon Road

Telephone 22792

Always at your service

## *L. Bibby*

For all Types — Rags, Iron and Metal, etc.  
Spot Cash Paid. Please Telephone 2101  
and our van will call.

THE PADDOCK ERMIN STREET  
STRATTON ST. MARGARET

## news & views

Aston Villa. What associations does that name recall? What memories does that revive, the outstanding claret and blue? What an honour to pull on that famous shirt. One of the greatest clubs ever, and it is so sad for those of us who have followed football over the years to see this pillar of Association Football, and all it counts for, struggling at the bottom of Division 2. Football (and life, incidentally) is full of ups and downs, and as most of us say, more of the latter. Our visitors today have certainly had more of the "downs" in recent seasons.

This is the first occasion we have been honoured by their presence at the County Ground. We can only hope they really enjoy their visit today, and will retain happy memories of Swindon and its supporters.

We shall be out to beat them, of course we want to win, but I am sure it is the wish of all of us to see this great club, with its fine traditions, rise to its former glories and become the power in English football it for so long enjoyed.

Aston Villa was founded in 1874, and has one of the finest grounds in the country, with a capacity of over 80,000.

Over the years many great players have appeared in their colours. One could list a whole page of well known names, among the most famous being Sam Hardy (a wonderful goalkeeper), Frank Barson (what a centre-half), Andy Ducat, Ron Starling, "Pongo" Waring, Frank Moss, Danny Blanchflower. So we could go on.

The Club has a wonderful record: seven times winners of the F.A. Cup (the last time in 1957); League Champions six times; and once winners of the double, League Championship and F.A. Cup.

These notes must be produced before the Blackpool game. We only hope the result was good. Fortunately, we salvaged a point at Oxford, but only because of the goal scoring chances missed by our opponents in the first-half. However, we still maintain a good position in the League table, and we are within striking distance of the leaders.

After today's game we face a hard programme. Tomorrow we travel to the Valley to play Charlton, and then on Saturday, 3rd January, 1970, we play the F.A. Cup-tie (3rd Round) at Blackburn.

---

## *Face in the crowd – is it you?*



In all future editions of this Season's programme we shall publish a photograph of a small section of the crowd at a previous match, one member of which will be clearly indicated by means of a circle. This person will be entitled to a free seat at the next match on producing the programme at the office.

# THE GREAT WESTERN HOTEL

(OPPOSITE SWINDON RAILWAY STATION)

The business man's hotel with a top class  
steak bar too!

Specialists in  
LUNCHEONS and DINNERS  
WEDDING PARTIES and RECEPTIONS  
good food — quick service

**J. ARKELL and SONS LIMITED Telephone SWINDON 22047**

## Mills and Merricks Limited

16-17 Bridge Street Swindon

Telephone 5365/6

**"HOME OR AWAY"**

our function is to ensure that your home is  
tastefully and economically furnished

SWINDON'S COMPLETE HOUSE FURNISHERS

### **New City Office Supplies Limited**

Office and Stationery Suppliers  
to Industry and Commerce

6 Commercial Road Swindon  
Telephone Swindon (STD Code 0793) 4605



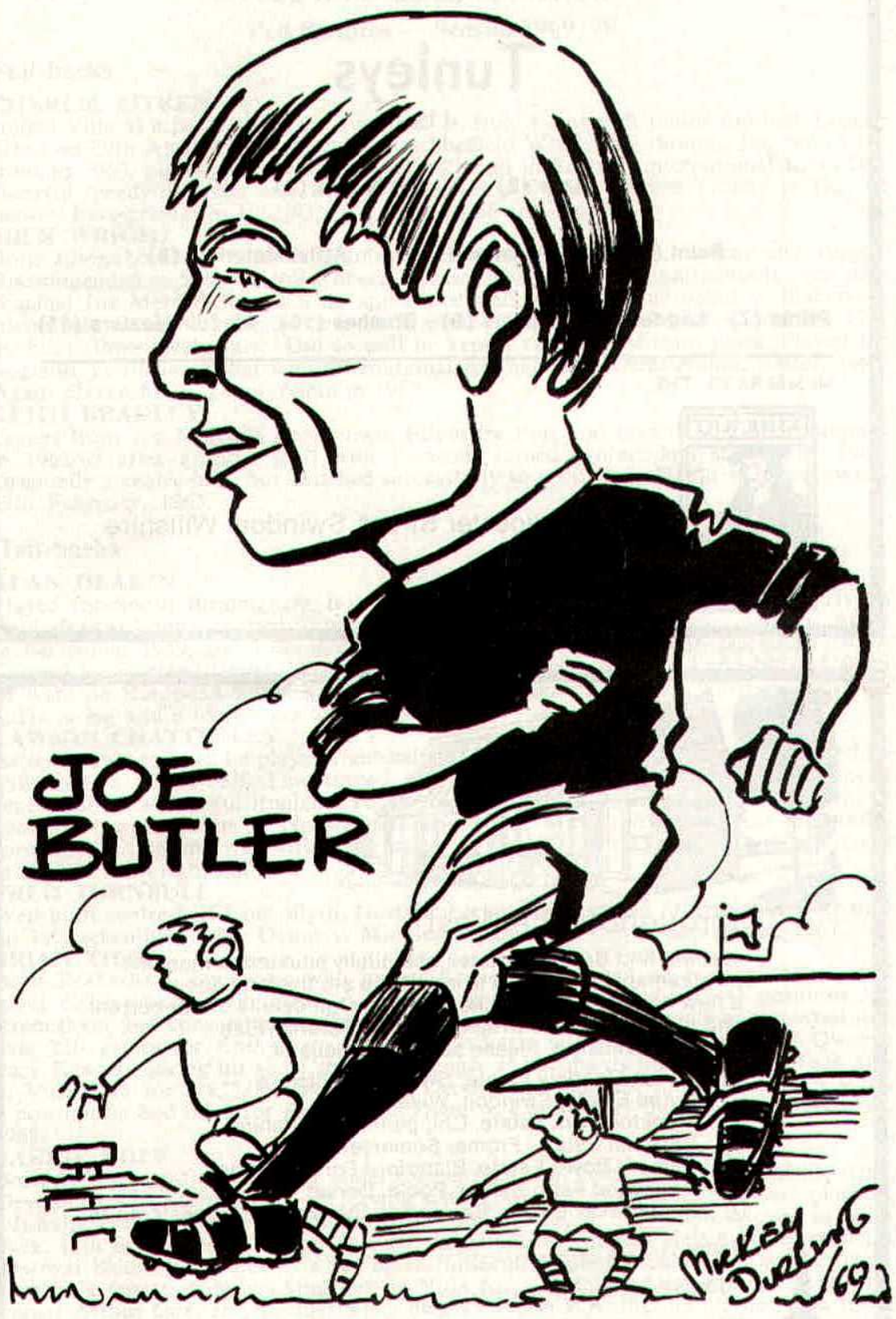
## CLARK BROS. (Swindon) LTD

Building and Civil Engineering Contractors

CONSULT US FOR  
BUILDING AND CIVIL ENGINEERING  
CONSTRUCTION IN ALL ITS PHASES

**STRATTON ROAD  
SWINDON**

Telephone Swindon 27261



**JOE  
BUTLER**

*Maxey  
Durling  
1969*

WE AIM TO PLEASE — TRY US

# Tunleys

(1)

Glass (2)

Wallpaper (3)

Paint (4)

Polishes (5)

Artist Materials (6)

Prints (7) Ladders (8) Mirrors (9) Brushes (10) Aladdin Heaters (11)

MEMBERS OF THE



12/13 Gloucester Street Swindon Wiltshire



throughout the West

you will find Bradley Estates beautifully situated to meet the requirements of modern living. If you are thinking about a new home and would like to receive full details of our current and planned estates write now to 74 Victoria Road Swindon Wiltshire. Please send me details of

- Green Meadow Estate, Swindon, Wiltshire
- Nythe Estate, Swindon, Wiltshire
- Monkton Park Estate, Chippenham, Wiltshire
- Park Hill Estate, Frome, Somerset
- Damory Down Estate, Blandford Forum, Dorset
- Harkwood Farm Estate, Poole, Dorset
- Roman Way Estate, Bourton-on-the-Water, Gloucestershire

Name.....

Address.....



## BRADLEYESTATES



# our visitors



## ASTON VILLA FOOTBALL CLUB

### Pen Pictures — Season 1969/70

#### Full-backs

##### **CHARLIE AITKEN**

Joined Villa as a professional in August 1959, from Edinburgh junior football. League debut on 29th April, 1961, at left-back v. Sheffield Wednesday (home). Jumped to the front in 1962, playing for Scotland Under-23 and in Scottish international trial. This cheerful speedy defender also won Villa Supporters' Club Terrace Trophy in 1961/62 season. Ever-present in 1962/63, 1964/65, 1965/66 and 1968/69.

##### **MICK WRIGHT**

Born Ellesmere Port. Former grammar schoolboy, who played soccer and rugby. Recommended to Villa by Bill Roberts, former manager of England schools team who coached Joe Mercer. Joined Villa apprentice staff, 1962. League debut v. Blackpool, Bloomfield Road, 7th September, 1963, while still 16. Turned professional on 17th birthday, three weeks later. Did so well he kept a regular first-team place. Played for England Youth team that won international tournament in Amsterdam, Easter, 1964. Again played for England Youth in 1965.

##### **KEITH BRADLEY**

Comes from Joe Mercer's home town, Ellesmere Port and became a Villa apprentice in 1962/63 after a short spell with Everton. Joined professional staff, May 1963. Originally a centre-half, but switched successfully to right-back. Debut v. Blues (away), 13th February, 1965.

#### Half-backs

##### **ALAN DEAKIN**

Played for South Birmingham Boys before joining Villa's groundstaff. Formerly an inside-forward, but switched to wing-half with great success. First team debut v. Army in November 1959, and League debut v. Rotherham (away) on 5th December, 1959. Capped for England Under-23 team in 1961/62 and again in 1962/63 and 1963/64 when he went on European tours. Six Under-23 caps. Regards 1964/65, when he broke an ankle, a leg and a toe, as his unlucky season.

##### **LAWSON CHATTERLEY**

Better known as Lew, he played right-half for Birmingham Boys, but was converted by Villa into a centre-half. Lew turned professional on 17th February, 1962. Played centre-half in successful England Youth team which won international tournament in 1962/63. League debut v. Nottingham Forest 4th May, 1963. Can also fill inside-forward position and was Villa's top scorer in 1966/67 with 13 goals. Captained team in 1967/68 from right-half.

##### **FRED TURNBULL**

Well-built centre-half from Blyth, Northumberland who signed professional after trial on 1st September, 1966. Debut v. Middlesbrough (away), 30th September, 1967.

##### **BRIAN TILER**

Born Rotherham. Six-footer who joined Rotherham United on leaving school, and spent eight seasons with them. A versatile player, Tiler filled several positions for Rotherham, but considers a midfield defensive role his best. Altogether he played just over 250 games for Rotherham. Tommy Docherty wanted to sign him for Queen's Park Rangers during his short spell as manager at Shepherds Bush, but later took him to Villa Park for a £35,000 fee on 24th December, 1968. Appointed captain of Villa, a position he had filled for Rotherham. Debut v. Cardiff City (home), 26th December, 1968.

##### **BARRIE HOLE**

Born Swansea and son of Wilf Hole, former Swansea Town and Wales outside-right. Developed with Cardiff City on leaving school, winning a regular first team place at left-half. Transferred to Blackburn Rovers for £40,000 in July 1966. Moved to Villa Park, 12th September, 1968, for £48,000. An attacking midfield player, Hole created a post-war record for Wales by a run of 28 consecutive internationals. Has won 29 caps. Created a sensation by walking out on Villa for a fortnight after disagreement with trainer Arthur Cox, and another when he told Welsh F.A. that he did not wish to be considered for 1969 international championship and went with Villa to America instead. Debut v. Hull (home), 14th February, 1968. Awarded Villa Terrace Trophy for 1969.



## **OUR VISITORS** (continued)

### **Forwards**

#### **WILLIE ANDERSON**

Born Liverpool and joined Manchester United's apprentice staff from Liverpool Boys. Understudied George Best at Old Trafford and when the Irish star was injured played for United in European and F.A. Cup semi-finals in 1965/66 before he made ten League appearances. Transferred to Villa for £20,000 19th January, 1967. Debut v. Chelsea (away), 21st January, 1967.

#### **LIONEL MARTIN**

Born Clee Hill, Shropshire, and won his schoolboy county cap. Became a Villa apprentice on leaving school and signed professional forms 29th July, 1964. A skilful inside-forward who can also play wing-half. League debut v. Southampton (away), 13th May, 1965.

#### **DAVE RUDGE**

Born Wolverhampton and joined Villa's apprentice staff straight from school. Go-ahead right winger who became professional May 1965. League debut v. Arsenal 27th August, 1966.

#### **DAVE SIMMONS**

Powerfully-built centre-forward, who was born in the Isle of Wight. Played for Gosport Boys and from there was taken on to the Arsenal apprentice staff. Became a professional with the Gunners and in 1968/69 season was loaned by them to Bournemouth. The Hampshire club would have liked to have retained his services, but he preferred to join Villa, who paid Arsenal a £15,000 fee on 6th February, 1969. Debut v. Charlton (away), 22nd February, 1969, scoring a goal.

#### **IAN HAMILTON**

Nicknamed Chico, this Streatham-born youngster, who can play either as a striker or midfielder, has linked up with Tommy Docherty for the second time. The first was when he left school to join Chelsea. He made his debut in the Chelsea first team when 16 against Spurs at White Hart Lane and scored two goals in three first team appearances. Transferred by Docherty's successor, Dave Sexton, to Southend for £5,000 in September 1968. Scored 17 goals in 38 appearances for Southend. Transferred to Villa for £40,000 4th June, 1969. England youth international.

#### **BRUCE RIOCH**

Born Aldershot, but brought up in Luton, joining Luton Town from school. Formerly a wing-half, he became a goalscoring inside-forward, netting 26 goals when Luton were promoted to Division III. Toured world with F.A. team in summer of 1969. Transferred to Villa, with his brother Neil, on 10th July, 1969, becoming Villa's first six-figure signing and the first for a Division III player. Bruce was valued at £100,000 and Neil at £10,000.

#### **NEIL RIOCH**

Born London, but grew up in Luton where he went to the same school as his older brother, Bruce. Joined Luton apprentice staff on leaving school and developed as a centre-half. Member of the England youth team in 1969 international youth tournament in East Germany. Signed for Villa 1st July, 1969.

#### **PAT McMAHON**

Signed for Celtic in 1967, after helping Kilsyth Rangers win the Scottish Junior Cup. He was only brought into Kilsyth team in an emergency a few months before the Cup Final. He was working as a GPO Executive Officer in London, and Kilsyth flew him up every weekend after they had been hit with injuries. While he was in London, he trained with Chelsea. He had two seasons with Celtic. His first season was 1967/68, and he played five games in the first team, scoring five goals. Last season, 1968/69, he played only three games, scoring two goals. Comes from Croy, a small mining village which has produced some great Celtic stars. Surprisingly given a free transfer by Celtic, he was quickly snapped up by Tommy Docherty, even though Dunfermline twice tried to sign him. Eventually signed for Aston Villa 10th June, 1969.

# Division I I

## Fixture List

**1969**

**August**

9 Blackburn Rovers	(A) 0—2
13 Cardiff City	(A) 2—2
16 Carlisle United	(H) 2—2
19 Cardiff City	(H) 2—1
23 Aston Villa	(A) 2—0
30 Charlton Athletic	(H) 5—0

**September**

2 League Cup (2) Swansea	(A) 3—1
6 Blackpool	(A) 2—3
13 Oxford United	(H) 0—0
16 Middlesbrough	(A) 0—0
20 Queen's Park Rangers	(A) 0—2
24 League Cup (3) Oxford	(A) 0—1
27 Leicester City	(H) 1—1
30 Millwall	(H) 2—1

**October**

4 Bolton Wanderers	(A) 1—0
7 Carlisle United	(A) 2—2
11 Sheffield United	(H) 2—1
18 Hull City	(H) 1—0
25 Portsmouth	(A) 1—3

**November**

1 Norwich City	(H) 2—0
8 Birmingham City	(A) 0—2
15 Watford	(A) 0—0
22 Huddersfield Town	(H) 2—1
29 Preston North End	(A) 1—3

**December**

6 Bristol City	(H) 1—1
13 Oxford United	(A) 0—0
20 Blackpool	(H) .....
26 Aston Villa	(H) .....
27 Charlton Athletic	(A) .....

**1970**

**January**

3 F.A. Cup Blackburn	(A) .....
10 Queen's Park Rangers	(H) .....
17 Leicester City	(A) .....
24 F.A. Cup (4)	
31 Bolton Wanderers	(H) .....

**February**

7 Sheffield United	(A) .....
14 Blackburn Rovers	(H) .....
21 Portsmouth	(H) .....
28 Hull City	(A) .....

**March**

7 Huddersfield Town	(A) .....
14 Preston North End	(H) .....
21 Bristol City	(A) .....
28 Watford	(H) .....
30 Norwich City	(A) .....
31 Birmingham City	(H) .....

**April**

4 Millwall	(A) .....
14 Middlesbrough	(H) .....

## Appearances

Name	Div. II	League		F.A.	Cup
		Cup	Cup	Cup	Winners Cup
Downsborough	24	2			2
Thomas	24	2			2
Trollope	24	2			2
Butler	24	2			2
Burrows	23	2			1
Harland	24	2			2
Smith	11 (1)	2			2
Horsfield	23	2			2
Smart	24	2			2
Noble	21	2			2
Rogers	18	2			2
Jones	8 (5)				(1)
Blick	1 (4)				1
Heath	14				
Down	(1)				
Penman	1			(1)	

(Playing as substitute in brackets)

## Goalscorers

Name	Div. II	League		F.A.	Cup
		Cup	Cup	Cup	Winners Cup
Horsfield	9				3
Noble	8	3			1
Jones	4				1
Rogers	3				
Smith	1				
Burrows	1				
Trollope	1				
Thomas	1				
Smart	2				
Opponents	1				

# League Table – Division I I

(up to and including Saturday, 20th December, 1969)

	P	W	D	L	F	A	P
Blackburn Rovers	24	14	5	5	37	21	33
Sheffield United	25	15	3	7	50	18	32
Huddersfield Town	23	12	6	5	39	24	30
Cardiff City	24	12	6	6	40	25	30
Leicester City	25	11	7	6	39	30	30
Queen's Park Rangers	24	12	5	7	45	32	29
<b>Swindon Town</b>	<b>24</b>	<b>9</b>	<b>9</b>	<b>6</b>	<b>31</b>	<b>27</b>	<b>27</b>
Middlesbrough	23	11	5	7	29	26	27
Blackpool	24	10	7	7	30	30	27
Bristol City	23	9	7	7	30	23	25
Carlisle United	25	9	7	9	36	34	25
Birmingham City	24	8	7	9	30	38	23
Oxford United	24	7	8	9	20	25	22
Charlton Athletic	24	5	11	8	22	38	21
Bolton Wanderers	25	7	6	12	35	41	20
Norwich City	23	8	3	12	17	29	20
Preston North End	24	6	7	11	25	32	19
Portsmouth	25	6	7	12	32	48	19
Hull City	23	7	3	13	31	42	18
Millwall	23	5	8	10	25	39	18
Watford	24	6	5	13	28	32	17
Aston Villa	24	4	8	12	18	35	16

---

## Previous Matches

---

### DIVISION II

#### SATURDAY, 6th DECEMBER, 1969

Drew with Bristol City (home) 1—1.

Team:

Downsborough; Thomas, Trollope; Butler, Burrows, Harland; Heath, Smart, Horsfield, Noble, Rogers.

Scorer: Horsfield.

Attendance: 23,288.

Referee: Mr. T. H. Reynolds (Swansea).

#### SATURDAY, 13th DECEMBER, 1969

Drew with Oxford United (away) 0—0.

Team:

Downsborough; Thomas, Trollope; Butler, Burrows, Harland; Heath, Smart, Horsfield, Noble, Rogers.

Attendance: 11,930.

Referee: Mr. R. V. Spittle (Great Yarmouth).

# Forthcoming Matches on This Ground

SATURDAY, 27th DECEMBER, 1969

Football Combination Cup  
**SWINDON TOWN v. SWANSEA TOWN**  
Kick-off 3 p.m.

---

SATURDAY, 10th JANUARY, 1970

Division II  
**SWINDON TOWN v. QUEEN'S PARK RANGERS**  
Kick-off 3 p.m.

---

TUESDAY, 20th JANUARY, 1970

Football Combination Cup  
**SWINDON TOWN v. CARDIFF CITY**  
Kick-off 7.30 p.m.

---



## Going by Car?

**BLACKBURN ROVERS**  
Saturday, 3rd January, 1970

Swindon to Blackburn . . .

Leave by Cricklade Road A345 to Cirencester.

15½ miles

Take A417 out of Cirencester then A435 via Baunton and Seven Springs to Cheltenham.

31½ miles

Leave by A4019 and A38 to Tewkesbury, keep left to the M50 Motorway — follow signs "Birmingham M50", at 1½ miles on join M5. At end of Motorway join A456 — follow signs "North West M6" and join the A4123 to **Wolverhampton.**

90½ miles

Leave by the A449 via Oxley and Standeford to join the A5 at Gailey, take 3rd road off roundabout to join the M6. Continue on the M6 Motorway until reaching "Intersection Preston A59".

180 miles

Follow signs "Blackburn A59" until junction with A677 into Buncer Lane, cross Preston Old Road into Spring Stancliffe Aqueduct and on to Bolton Road and Ewood Park,

**Blackburn.**

192 miles

Route kindly supplied by R.A.C.



# The man in the middle



## MR. L. CALLAGHAN

His League career started in 1950 when he was appointed as a linesman to the Football League. He became a referee with the League in 1954. Among his many visits to Swindon he will probably be remembered most of all for his handling of our game against Shrewsbury in the Football League Cup in 1960. The game, played in atrocious conditions, went to extra time and became a test of stamina for those taking part.

He is a member of the panel of referees approved by F.I.F.A., and as such he officiated during the World Cup games in England in 1966. More recently he handled the F.A. Cup Final between West Bromwich Albion and Everton in 1968.

**T** RUSTEE  
**S** AVINGS  
**B** ANK

93 Commercial Road  
Swindon



### Facilities include

- CURRENT ACCOUNT SERVICE
- 24 HOUR CASH DISPENSER
- T.S.B. UNIT TRUST
- CONTRACTUAL SAVINGS SCHEME  
(giving substantial Tax benefits)

**INTEREST 7% IN THE  
SPECIAL INVESTMENT DEPT.**

## Hatton's Newsagency

A. J. D. & N. J. Woodhouse

Newsagents :: Tobacconists  
Confectioners

Agents for Wessex School of Motoring  
Booking Agents for Rimes Coaches

6 REGENT CIRCUS (near G.P.O.)  
Telephone Swindon 22731

## BRETT'S

PET and GARDEN SUPPLIES

32-33 Commercial Road  
and  
6 Cromwell Street Swindon

## THE PORK SHOP

(Swindon Bacon Curing Co. Ltd.)

Specialists in

Bacon - Pork - Cooked Ham

50 FLEET STREET SWINDON  
Telephone 22122

## J. WILMER

Coal Merchants

St. Margaret's Road Swindon

Telephone 22535

## SOUTHERN LAUNDRY CO. LTD.

Launderers and Dry Cleaners

HAYDON STREET SWINDON  
Telephone 4161

At Your Service

## A. E. LUDLOW LIMITED

Wholesale Fruit and Potato Merchant

COLBOURNE STREET  
SWINDON WILTSHIRE  
Telephone Swindon 3583

We deliver Fresh Fruit, Vegetables  
and Potatoes daily—Wholesale Only

FOR ALL YOUR ANGLING NEEDS  
CONSULT

## Frank Woodward

Swindon's Fishing Tackle Specialist

25 HAVELOCK STREET SWINDON  
Telephone 3879

For Paints of Good Quality

## H. S. Hodges & Sons

(SWINDON) LTD.

Cricklade Road Swindon  
Telephone 22422

Dulux, Brolac, Valspar, Wallcharm, etc.

24 hour Delivery  
Service -

YOUR COMPLETE JANITORIAL SERVICE

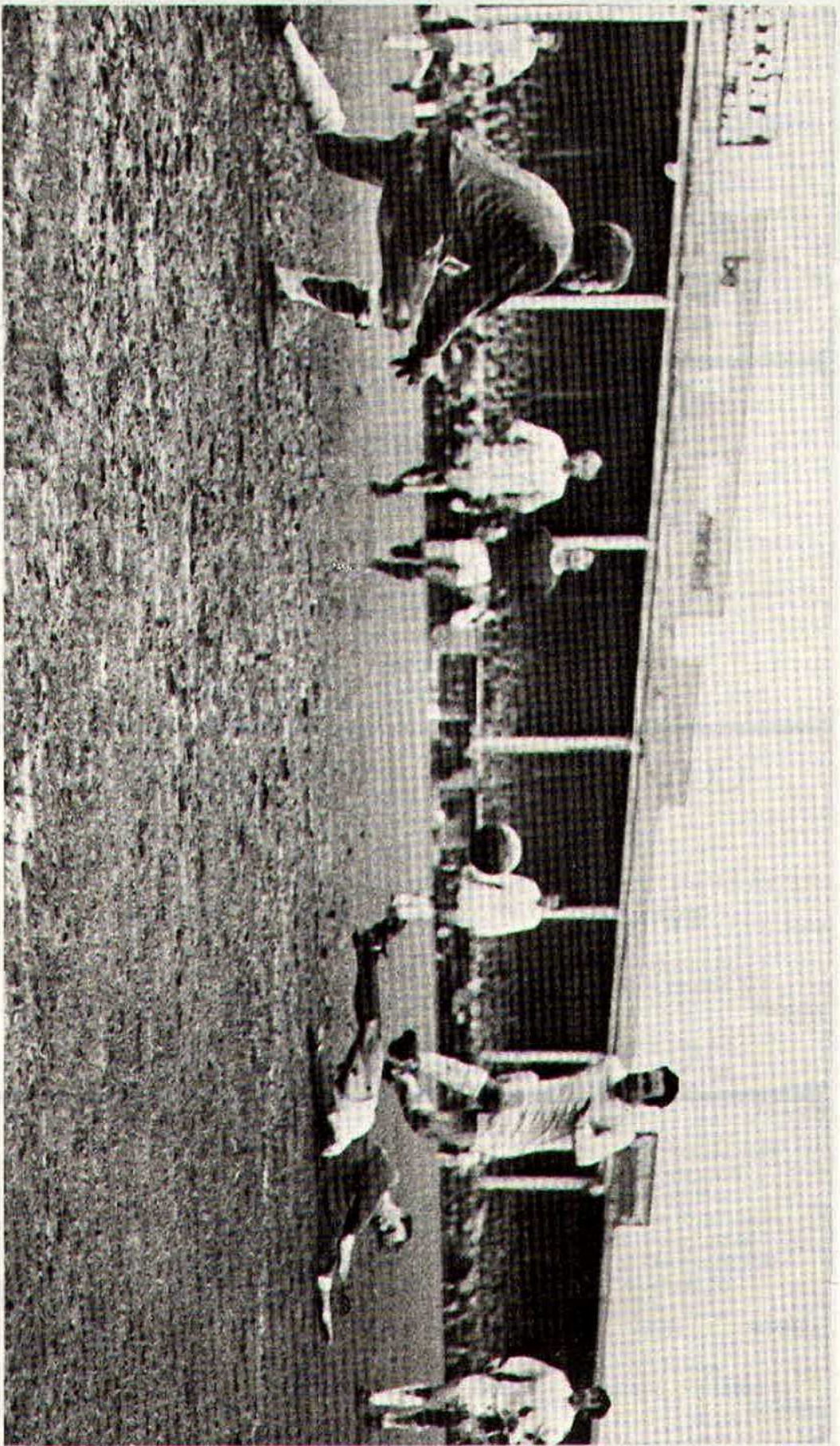
## Wilts Cleaning Supply Service

Kembrey Warehouse Rear 255 Cricklade Road  
SWINDON

Telephone 21012

Represented by G. ALEXANDER  
Telephone Swindon 27833





**Peter Noble was unable to connect with this cross despite his all-out effort.**

Photograph by R. Marsh.

## HARRY LUNN

(Ex NOTTS COUNTY, PORTSMOUTH and SWINDON TOWN F.C.)

**Fish Bar and Restaurant**  
**27-28 COMMERCIAL ROAD SWINDON**

RESTAURANT open 9 a.m. to 10 p.m. for

**Snacks - Lunches - High Teas - Evening Meal**

FISH BAR open Mid-day and Evenings until 11 p.m.

## HULFORD MOTORS LIMITED

### SELF DRIVE HIRE

Fleet of 1969/8 Fords    Escorts De-Luxe  
Cortinas De-Luxe    Cortinas 1600 Estate  
(Bench Seat Column Change) — Zephyr V4s

### SHRIVENHAM ROAD

(200 yards from Football Ground)

Telephone 4934

Large Car Park Available

## COWLEY BROS. (Wroughton) LTD.

BUILDERS OF MODERN ATTRACTIVE  
HOUSES and BUNGALOWS

Developments at

SWINDON

WROUGHTON

BADBURY

Office

**28 NEWPORT STREET**  
**SWINDON**

Telephone Swindon 6870

Reserved for British Rail



**Inter-City**

# Key of the Board

## First Section

A—Burnley v. Liverpool  
 B—Manchester Utd. v. Wolverhampton W.  
 C—Newcastle United v. Leeds United  
 D—Nottingham Forest v. Arsenal  
 E—Sheffield Wednesday v. Sunderland  
 F—Tottenham Hotspur v. Crystal Palace  
 G—Albion v. West Ham United  
 H—Birmingham City v. Blackpool  
 I—Huddersfield Town v. Sheffield Utd.  
 J—Hull City v. Blackburn Rovers  
 K—Middlesbrough v. Carlisle United  
 L—Millwall v. Queen's Park Rangers  
 M—Norwich City v. Leicester City  
 N—Preston N.E. v. Bolton Wanderers  
 O—Watford v. Charlton Athletic  
 P—Bournemouth & B.A. v. Brighton & H.A.  
 Q—Bradford City v. Halifax Town  
 R—Bristol Rovers v. Reading  
 S—Doncaster Rovers v. Rotherham Utd.  
 T—Gillingham v. Fulham

## Second Section

A—Orient v. Luton Town  
 B—Plymouth Argyle v. Torquay United  
 C—Stockport County v. Barnsley  
 D—Walsall v. Mansfield Town  
 E—Aldershot v. Swansea Town  
 F—Colchester United v. Notts County  
 G—Grimsby Town v. Bradford  
 H—Northampton Town v. Port Vale  
 I—Peterborough Utd. v. Scunthorpe Utd.  
 J—Southend v. Lincoln City



## Going by Car?

### CHARLTON ATHLETIC

Saturday, 27th December, 1969

#### Swindon to Charlton . . .

Leave Swindon by the A345, at Common Head take the A419 until junction with the A4 turn left to **Hungerford**.

16½ miles

Continue on A4 via Newbury and Reading to Maidenhead Thicket roundabout, take 3rd road off signed "**London M4**".

53 miles

Follow M4 until after Heston Service Area, take the A4 until "Intersection N and S Circular Roads" and at the Intersection take the **A205**.

76 miles

Continue on A205 across Kew Bridge via Mortlake, Barnes and Putney until junction with A3 at West Hill. Keep left and follow A3 through Wandsworth, Clapham Common, to junction with A2217 at Clapham. Follow same road via Brixton and signs "Camberwell" into Coldharbour Lane, after another ½ mile turn left onto the A215 at Denmark Hill. Turn right onto the A202 and continue via Peckham to **New Cross**.

90 miles

At junction take the A2 (New Cross Road) and follow until junction with the B210 (Charlton Way) and continue to **Charlton**.

94 miles

Route kindly supplied by R.A.C.



## *Supporters' Club Notes*

These are being written before the Blackpool match, for the benefit of the printers — this allows them to have Xmas off as well — so any improvement in the League position is unknown at the moment.

A welcome today to the team and supporters of Aston Villa. This will not be an easy match for our lads, despite the present position of the Villa, so all supporters here today can lend them a hand, by total support for 90 minutes. Xmas and Easter matches have, by previous experience, affected promotion chances for many teams one way or another, and it is generally acknowledged that the Town is still at this time very seriously in the running for Division 1. Any ultimate success is in the first instance very much in the hands of the Manager, players and coaches. Whole-hearted — and full-throated — support from the supporters is also of paramount importance. So let's look forward to the maximum support in the next critical weeks.

On Tuesday, 16th, the now annual get-together of the Town players, their wives and ladies, and the players of the Supporters' Club, Supporters Social Club and West Swindon Thistle football teams took place in the Social Club. As previous years, it was quite a success. It is not too easy to arrange these functions in the playing season, and Manager Fred Ford keeps a strict eye on any party that might interfere with training and match games, as is only too right.

On Tuesday, 9th December, the Chairman and Hon. General Secretary of the Supporters' Club met the Chairman and Liaison Committee of the Football Company in a routine meeting to discuss affairs of mutual interest. A full report will be made at the next Supporters' Club meeting in early January on the matters under discussion. The main object was to seek information on the new stand project and how the Supporters' Club could assist in its building.

The first stage — the bones of the building with seating accommodation and floor spaces — is expected to be completed by about March 1971. Under the stand will be an area designated for the permanent Supporters' Club accommodation, together with other accommodation — Board Room, administration offices, training and changing facilities, etc. The provision of these, in terms of time and quality, depends entirely on finance, so any forecast as to when these later stages would be available is a matter of conjecture. However, the object is to proceed at the earliest possible time, and to this end the Supporters' Club must pull its full weight in providing the money which will be needed. An assurance to this effect was given, as such an objective has been the target of the Supporters' Club for a long time. When details are discussed in Committee, it will then be up to members to respond wholeheartedly to any calls for assistance by the Supporters' Club Committee. From then on, the speed with which plans are activated rests with members themselves.

To close, a Happy New Year to one and all, and may 1970 herald a new era in the long history of both the Football Company and the Supporters' Club.

Suppliers to the Swindon Team  
**MAY WE SUPPLY YOU?**



**EARLE**

of Chippenham Limited

MAIN

**FORD**

DEALERS

**COCKLEBURY ROAD CHIPPENHAM**

Telephone 3255

**H. HIBBERD LIMITED**

**FOR YOUR EARTH-MOVING EQUIPMENT**

*Plant Hire Contractors*



**40 NEWPORT STREET SWINDON**

Telephone Swindon 6125

# Football Combination

## Fixture List

### 1969

#### August

9	Southampton	(H)	2—2
16	Swansea Town	(A)	0—1
23	Queen's Park Rangers	(H)	1—4

#### September

4	Oxford United	(A)	2—0
6	Bristol City	(H)	1—2
17	Cardiff City	(A)	3—2
20	Arsenal	(H)	1—2
27	Luton Town	(A)	0—2

#### October

4	Reading	(H)	1—2
7	Bristol Rovers	(A)	P
11	Ipswich Town	(A)	1—0
21	Bristol City	(A)	2—7
25	Crystal Palace	(H)	1—0

#### November

8	Plymouth Argyle	(H)	3—1
15	Crystal Palace	(H)	1—2
22	Swansea Town	(A)	1—1
29	Tottenham Hotspur	(H)	1—4

#### December

8	Peterborough United	(A)	0—2
13	Leicester City	(H)	0—2
17	Plymouth Argyle	(A)	1—1
20	West Ham United	(A)	3—1
27	Swansea Town	(H)	.....

### 1970

#### January

17	Gillingham	(A)	.....
20	Cardiff City	(H)	.....
24	Chelsea	(H)	.....
27	Arsenal	(A)	.....

#### February

3	Arsenal	(H)	.....
7	Fulham	(H)	.....
10	Bristol Rovers	(H)	.....
17	Walsall	(A)	.....
24	Northampton	(A)	.....

#### March

7	Birmingham City	(H)	.....
11	Crystal Palace	(A)	.....
18	Norwich City	(A)	.....
21	Bristol Rovers	(A)	.....

#### April

4	Bournemouth & B.A.	(H)	.....
---	--------------------	-----	-------



Smith

Name	Appearances		Goalscorers	
	Foot. Comb.	Foot. Cup	Foot. Comb.	Foot. Cup
Price	1			
Dawson	7	3		
Fry	14	3		
Desmeules	9	1		
Blick	16	4		
Handrick	16	4	1	
Heath	4			
Penman	11	1	1	
Down	13	3	6	
Dangerfield	14 (1)	3	10	1
Moss	4	1		1
Bailey	11 (2)	4	1	
Grzadowski	2			
Hubbard	15	4		
Jones (R)	11	3		
Allen (K)	8	2		
Jones (C)	4	1		
Wetson	1	1		1
Claypole	10	1		
Porter	2	2	1	1
Allen K. R.	2	1		
Smith		1		1
Boyd		1		
(Playing as substitute in brackets)				

---

# AKERS GARAGE LIMITED

THE STREET MOREDON SWINDON WILTSHIRE

Telephone Swindon 3457/8

main dealer for  
**VAUXHALL/BEDFORD**  
and  
Parts and Accessories  
Sales and Service

Showrooms open  
MONDAY to FRIDAY — 8 a.m. to 8 p.m.  
SATURDAY — Closed 7 p.m.  
SUNDAYS — 10 a.m. to 2 p.m. for Petrol and Viewing

---



MODERN LIVING IN EXPERIENCED HANDS

Wilson homes are the result of over 60 years experience in house building. The Company Architect and his design team are always researching into the ever changing requirements of home buyers, to give them better designed homes, which are easy to run, easy to maintain and comfortable to live in.



N.H.B.R.C.

All our houses and bungalows are built to the stringent specification of the National House Builders Registration Council who will guarantee your home for 10 years.

Visit a Wilson Show Home and you will see for yourself why Wilson's have such a reputation in giving value for money.

**WILSON**

(Swindon) LTD., 90-92 Commercial Road, Swindon Telephone 6361 (3 lines)

---

## seating manufacturers for Stadium Seats Ltd

- \* Heavy, medium and light steel fabrication
- \* Custom made production line equipment
- \* Ancillary work for industry and the building trade

FAST EFFICIENT SERVICE BY



**MARTYN LYNSHAW LTD**

BOUNDARY WORKS - STRATTON ROAD - SWINDON - WILTS

Telephone 21844

## spectator seating in high density polyethylene

- \* Supplied to over 36 Football League clubs
- \* Any colour. No maintenance
- \* Industrial seats for the food, electronics and pharmaceutical industries
- \* Largest supplier of spectator and industrial seating in Europe

**STADIUM SEATS LTD**

STRATTON ROAD - SWINDON - WILTS Telephone 21844